



**SEAFDEC/UN
ENVIRONMENT/GEF
Fisheries Refugia Project**

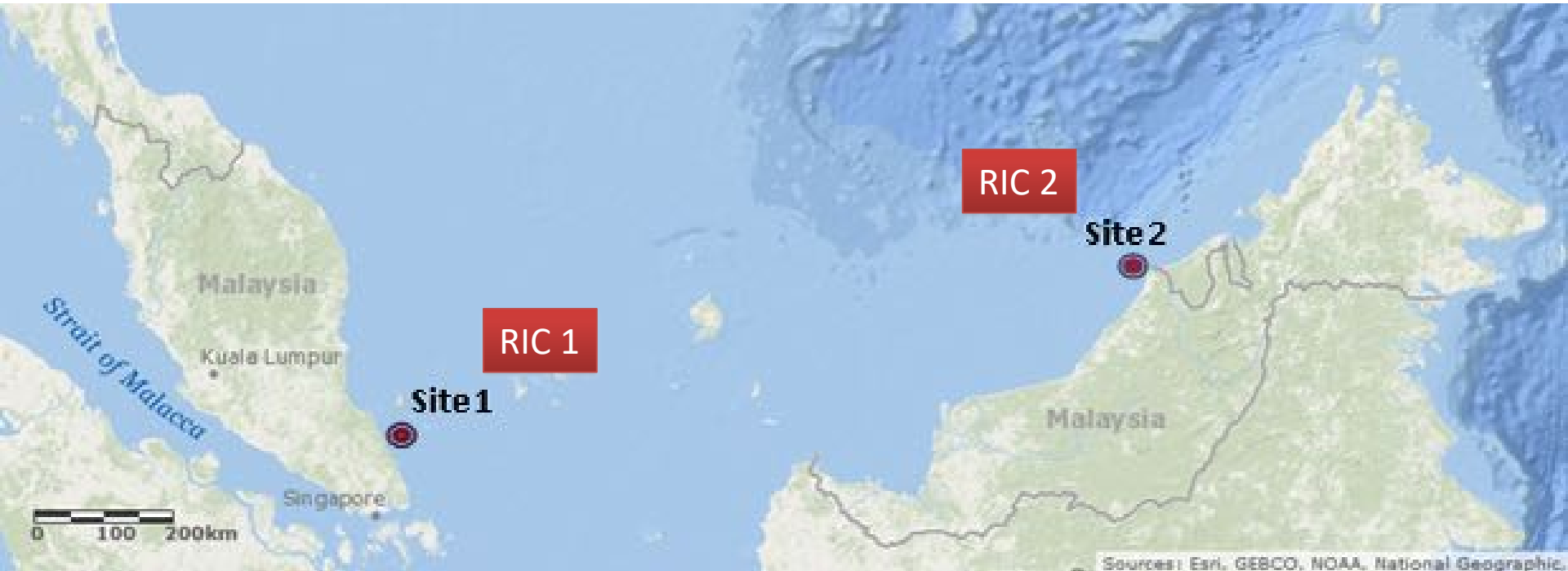
**Fisheries Refugia Centers
at National Level: Lessons
Learned from Malaysia**

**By
Department of Fisheries
Malaysia**



The 2nd Regional Scientific and Technical Committee Meeting for the SEAFDEC/UN Environment/GEF Project on Establishment and Operation of a Regional System of Fisheries *Refugia* in the South China Sea and Gulf of Thailand, 21-23 May 2019,

Refugia Information Center (RIC) in Malaysia



Site 1: Tanjung Leman, Johor – Lobster (*Panulirus* spp.)

Site 2: Kuala Baram, Sarawak – Tiger Prawn (*P. monodon*)

RIC 1: Tanjung Lemman, Johor

01



DOF has set up a RIC at Tanjung Lemman Ferry Jetty to facilitate the dissemination of Information about the Fisheries Refugia Project in Malaysia.

02



The setup and maintenance of RIC were funded using national fund and GEF fund, in collaboration with Johor Corporation (under state government).

03



RIC was officiated by DOF DG on the 20th of November 2017.

04



Officiating ceremony was also attended by local fishermen and representatives from the SEAFDEC/UN Environment/GEF, Dr. Kom Silapajarn and Dr. Christopher Patterson.



Walaupun udang kara
perbezaan n
namun m
tersebut
Tuan dapat
pilih udang
kara yang
lebih baik


**Pusat Informasi Refugia
Tanjung Leman, Johor**
Ditubuhkan oleh

DATO' HAJI MOHD BIN HAJI MOHD. SAM
Ketua Pengarah, Pusat Refugia Malaysia
20 November 2017
Dengan kerjasama


Udang Karang
Pinned Spiny Lobster
Palaemon serratus

Identity Confirmed

Access Granted

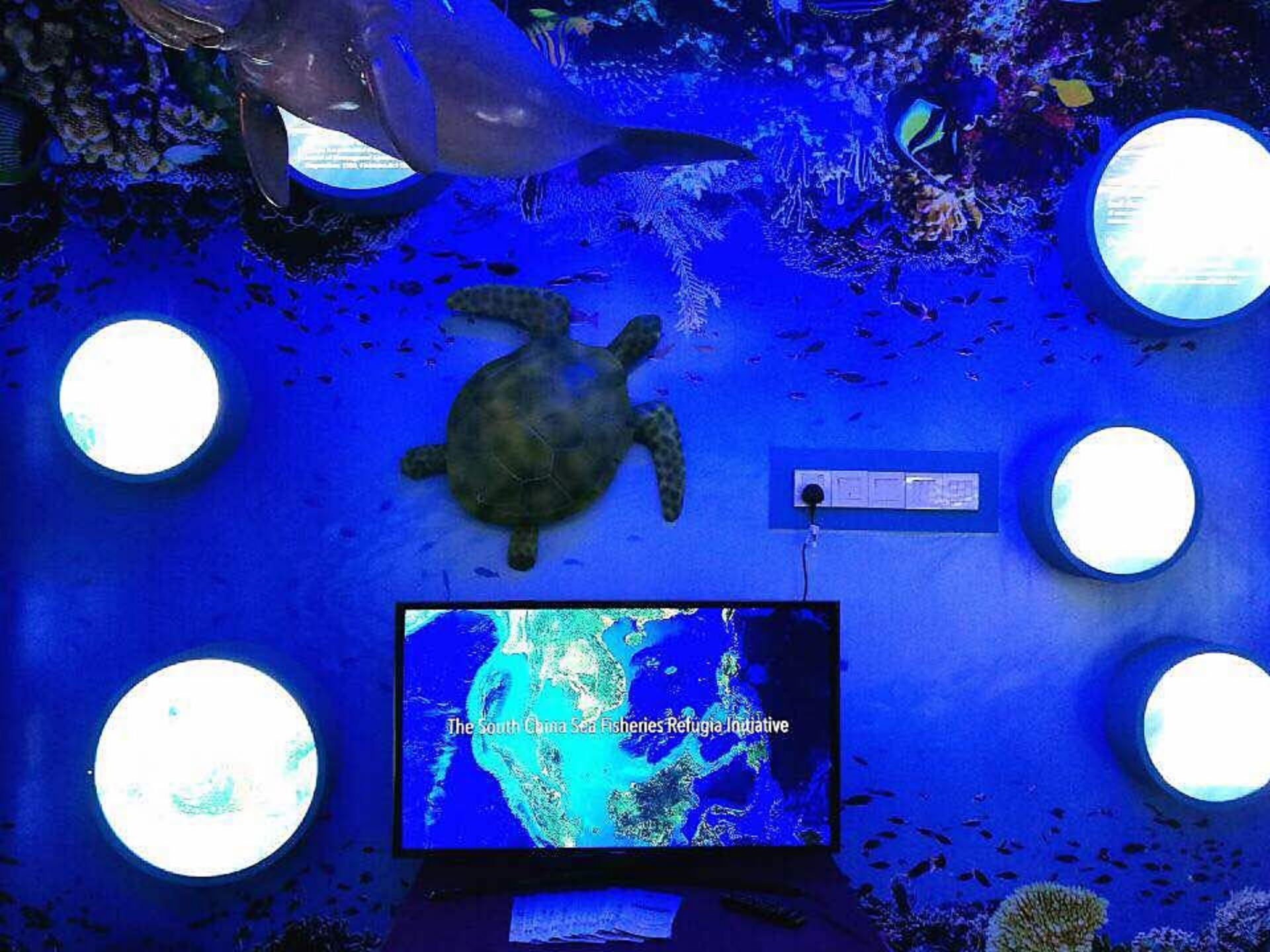


NEGARAKU
BERSATU

Majlis Perasmian
Pusat Informasi Refugia
Tanjung Leman, Johor







Shark
The shark is a large, powerful predator that has been overfished in many parts of the world. It is a vital part of the marine ecosystem and is being protected by the South China Sea Fisheries Refugia Initiative.

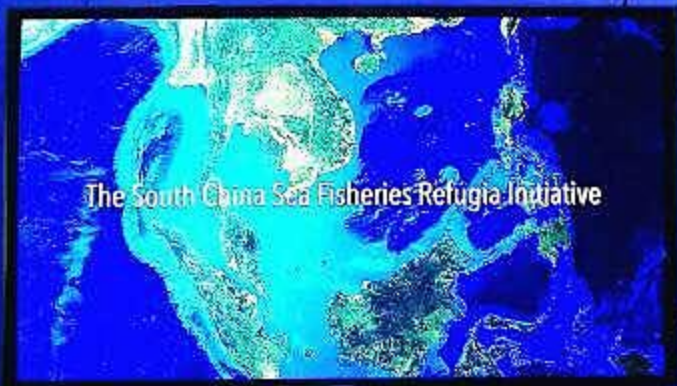
Shark
The shark is a large, powerful predator that has been overfished in many parts of the world. It is a vital part of the marine ecosystem and is being protected by the South China Sea Fisheries Refugia Initiative.

Shark
The shark is a large, powerful predator that has been overfished in many parts of the world. It is a vital part of the marine ecosystem and is being protected by the South China Sea Fisheries Refugia Initiative.

Shark
The shark is a large, powerful predator that has been overfished in many parts of the world. It is a vital part of the marine ecosystem and is being protected by the South China Sea Fisheries Refugia Initiative.

Shark
The shark is a large, powerful predator that has been overfished in many parts of the world. It is a vital part of the marine ecosystem and is being protected by the South China Sea Fisheries Refugia Initiative.

Shark
The shark is a large, powerful predator that has been overfished in many parts of the world. It is a vital part of the marine ecosystem and is being protected by the South China Sea Fisheries Refugia Initiative.



Shark
The shark is a large, powerful predator that has been overfished in many parts of the world. It is a vital part of the marine ecosystem and is being protected by the South China Sea Fisheries Refugia Initiative.

YBhg. Dato Haji M...
Ketua Pengarah Perikanan Malaysia
20 NOVEMBER 2017 (ISNIN), JETI TANJUNG LEMAN
#myDOF PenerajuPerikanan



Udang Karang
Langthops Spiny Lobster
Panulirus argus



Udang Karang
Ornate Spiny Lobster
Panulirus ornatus

Tanjung Lemau RIC

Requirement	Example Tanjung Lemau RIC
Site selection must be strategic	Ferry terminal – tourist attraction
Consultation with location owner for rental/CSR	CSR by Johor Corporation (facility owner)
Renovation cost	DE DOF and GEF
Workers	On contract basis
Plan for space expansion	Adjacent lot
Exhibit material	Interesting and informative

Kuala Baram RIC

01

Site: DOF
Regional
Office,
Miri

02

Renova-
tion:
DE DOF

03

Managed
by:
DOF
Sarawak
staff

04

First stage
setup

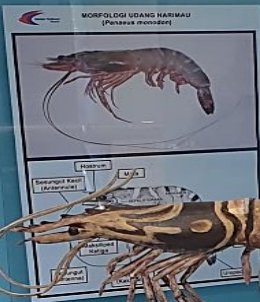
05

Planning
for
expansion
and
upgrade
(space and
exhibit)

EKOSISTEM PAYA BAKAU



POPULASI MAMBAK
1980-2000



BIOLOGI UDANG PERANG



KAWASAN CADANGAN REFUGIA UDANG HARIMAU DI KUALA BARAM, MIRI



Petunjuk:

A - Latitud : 04° 35.000' N Longitud : 114° 04.000' E	D - Latitud : 04° 43.000' N Longitud : 113° 49.000' E
B - Latitud : 04° 39.000' N Longitud : 114° 03.000' E	E - Latitud : 04° 24.000' N Longitud : 113° 59.000' E
C - Latitud : 04° 46.000' N Longitud : 113° 55.000' E	



Thank You!

